

Very High Speed, Intelligent Load Cell Interface Card

Model LCIC-WIM Load Cell Interface Card with USB/RS232/RS485

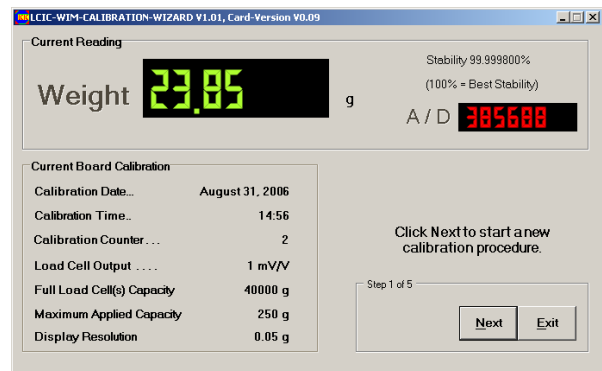


FEATURES

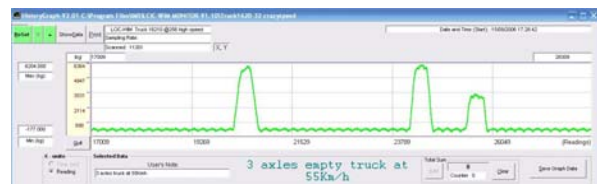
- Very high speed; upto 52,000 samples per second
- 24 Bit A/D with ± 8 million counts for tension and compression applications
- Powerful 32 bit / 135 MIPS DSP for high speed on-board processing. OEM applications can be embedded on the board
- 4 opto-isolated outputs configurable as setpoints, latching alarms or user outputs
- 4 opto-isolated inputs; Input #1 has counter option
- Analog output 0 to 2.5V 16 bit
- 8 digit LED display
- On board temperature sensor
- USB Interface; 2.0 Full Speed compatible
- RS232/RS485 communications. Ideal for PLC based applications
- Multiple boards may be connected via USB or RS485

SOFTWARE

LCIC-WIM Calibration Wizard software is included with each board:



Included is the LCIC-WIM Monitor utility which is a vital tool for analysing dynamic load/force systems. It takes full advantage of the board's speed:



Graph shows truck axes measured at 55 km/hr

TYPICAL APPLICATIONS

- Dynamic weighing –vehicles, livestock
- Dynamic force measurement
- High speed checkweighing
- High speed filling / batching
- Beltweighing
- Force measurement / Press Machines
- WIM-Monitor for analysis of dynamic systems

MAIN SPECIFICATIONS

LOAD CELL INPUT

- 5 Volt excitation for upto 10 load cells (350 Ohm)
- Compatible with 1, 2 & 3 mV/V load cells
- Low noise wide bandwidth amplifier & 24 bit ADC

STANDARD INTERFACES

- USB 2.0 Full Speed compatible
- Combined RS232/RS485

OUTPUTS

- 4 opto-isolated solid state relays rated at 50V, 300mA. Configurable as setpoints, latching alarms or user outputs. Each with status LED.
- Analog output of 0 to 2.5V with 16 bit resolution.

DIGITAL INPUTS

- 4 opto-isolated inputs with 10-30 VDC range. Each with status LED
- Input #1 configurable as high speed counter
- Input #2 configurable as sample trigger

DIMENSIONS (MM)

- Standard OEM model 160 x 100pcb (Eurocard)
- ABS cased option

EXPANSION

- Board is ready to accept piggy-back modules for OEM special requirements



I.M.S. INDUSTRIAL
MEASUREMENT
SYSTEMS LTD.

P.O. BOX 6305

Haifa, Israel 31062

Tel: +972 (4) 811-0877

Fax +972 (4) 811-0875

Fax in the USA: +1 (775) 659-4511

web www.ims.co.il
email sales1@ims.co.il

UK & Europe:
Tel: +44 (0)1509 521531